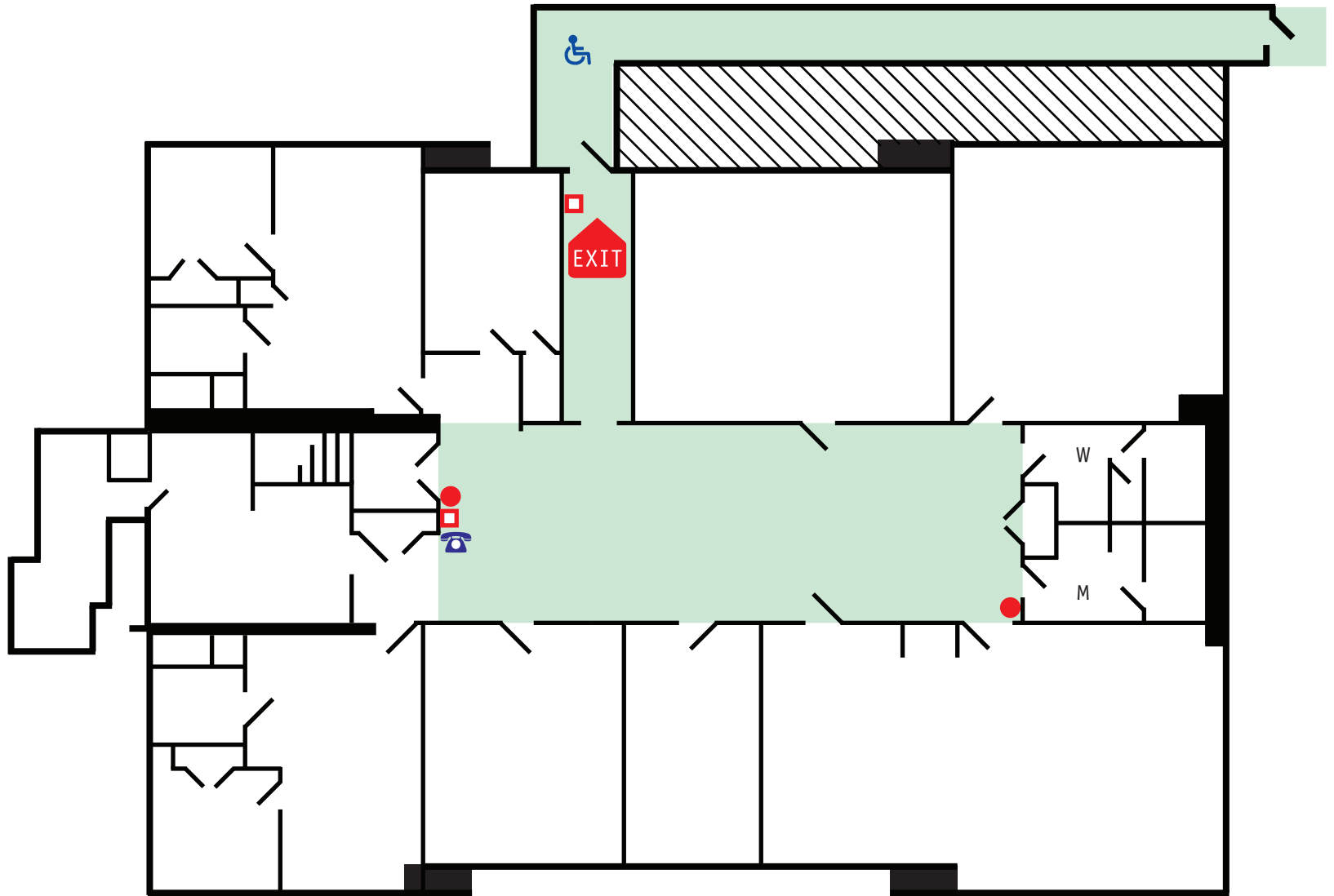














MICA PLACE LEVEL 1

Facing East



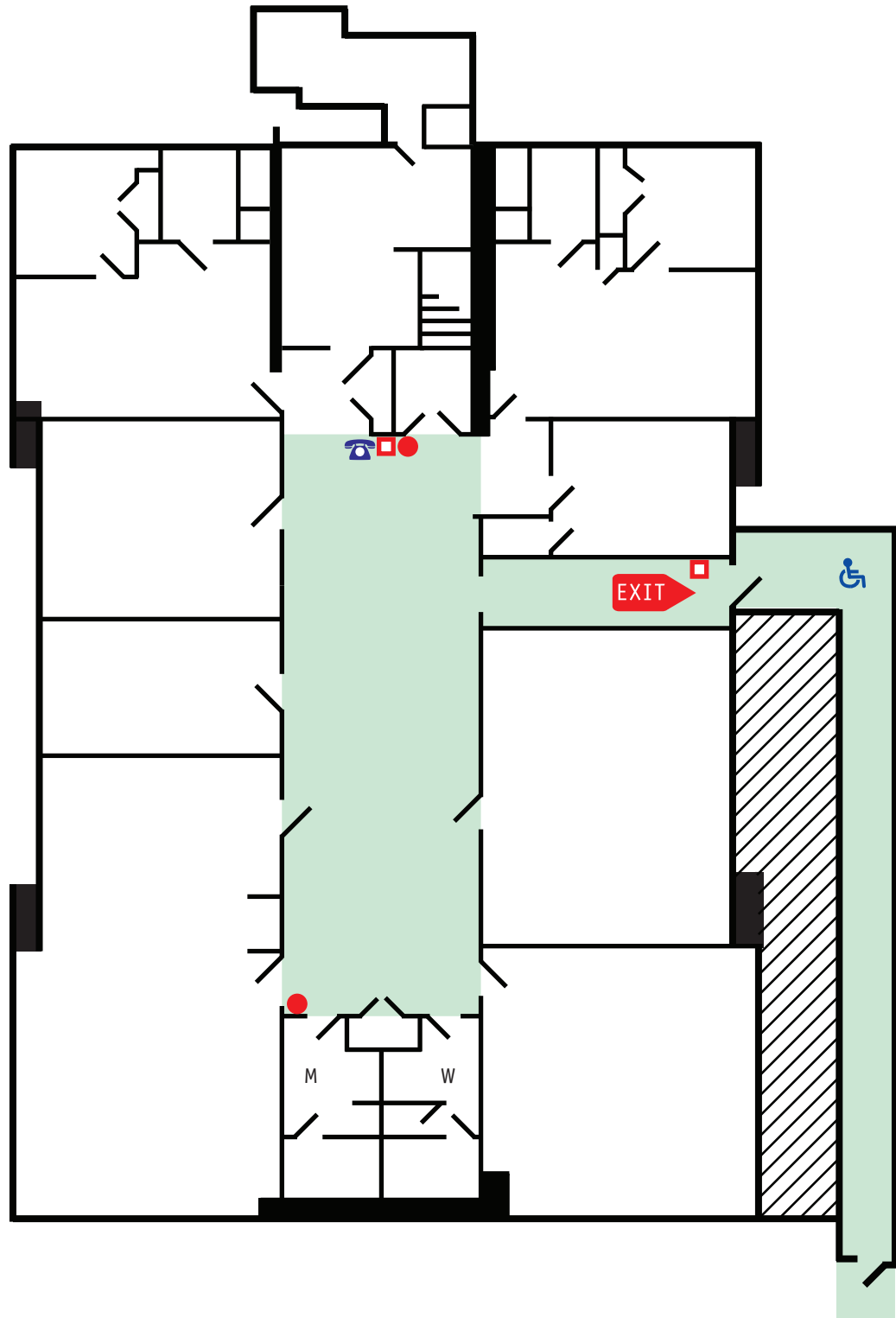
SAFE MEETING LOCATION:
N. Collington and Ashland Avenue

EMERGENCY SHELTER:
First floor interior hall

- | | | | |
|---|-------------------------|---|---------------------------|
|  | EXIT ROUTE |  | TELEPHONE |
|  | EMERGENCY EXITS |  | FIRST AID KITS |
|  | FIRE EXTINGUISHER |  | SECURITY DESK |
|  | FIRE ALARM PULL |  | DISABILITY REFUGE |
|  | EYE WASH STATION / SINK |  | HOUSE KEEPING |
|  | EMERGENCY INFORMATION |  | HEALTH AND SAFETY STATION |

MICA PLACE LEVEL 1

Facing North
















SAFE MEETING LOCATION:

N. Collington and Ashland Avenue

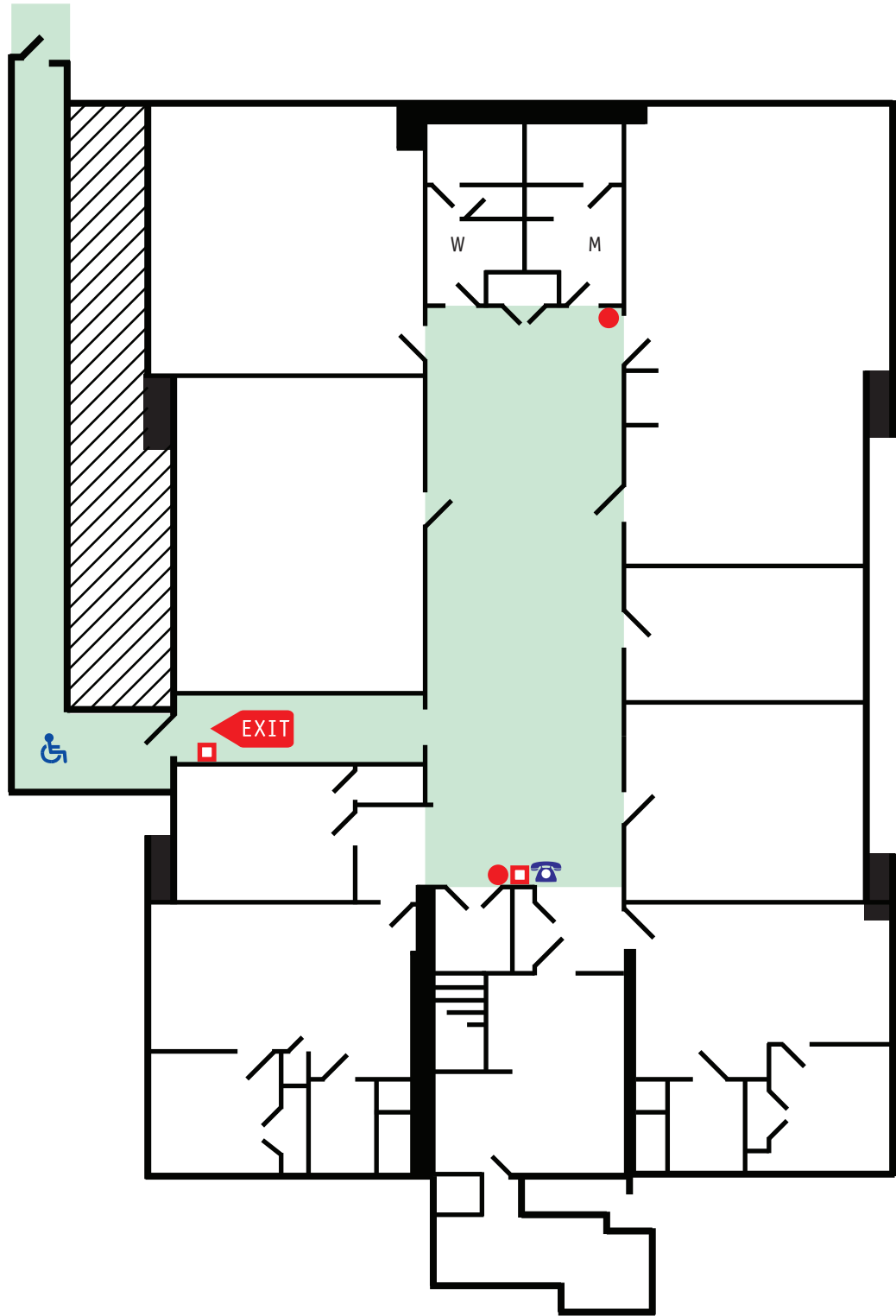
EMERGENCY SHELTER:

First floor interior hall

- | | | | | |
|---|-------------------------|--|---|---------------------------|
|  | EXIT ROUTE |  |  | TELEPHONE |
|  | EMERGENCY EXITS | |  | FIRST AID KITS |
|  | FIRE EXTINGUISHER | |  | SECURITY DESK |
|  | FIRE ALARM PULL | |  | DISABILITY REFUGE |
|  | EYE WASH STATION / SINK | |  | HOUSE KEEPING |
|  | EMERGENCY INFORMATION | |  | HEALTH AND SAFETY STATION |

MICA PLACE LEVEL 1

Facing South



SAFE MEETING LOCATION:

N. Collington and Ashland Avenue

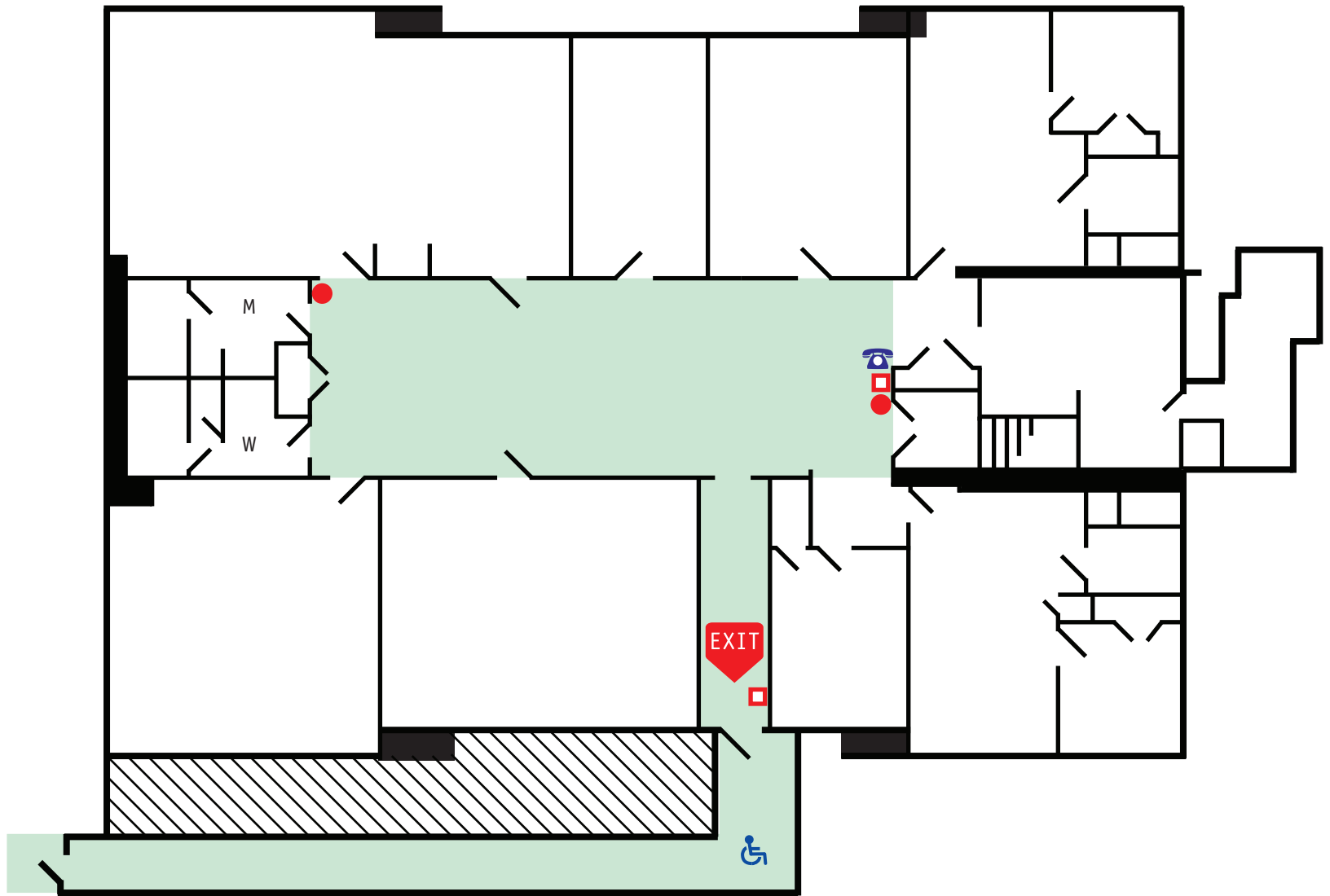
EMERGENCY SHELTER:

First floor interior hall

- | | | | | |
|--|-------------------------|--|--|---------------------------|
| | EXIT ROUTE | | | TELEPHONE |
| | EMERGENCY EXITS | | | FIRST AID KITS |
| | FIRE EXTINGUISHER | | | SECURITY DESK |
| | FIRE ALARM PULL | | | DISABILITY REFUGE |
| | EYE WASH STATION / SINK | | | HOUSE KEEPING |
| | EMERGENCY INFORMATION | | | HEALTH AND SAFETY STATION |

MICA PLACE LEVEL 1

Facing West















SAFE MEETING LOCATION:

N. Collington and Ashland Avenue

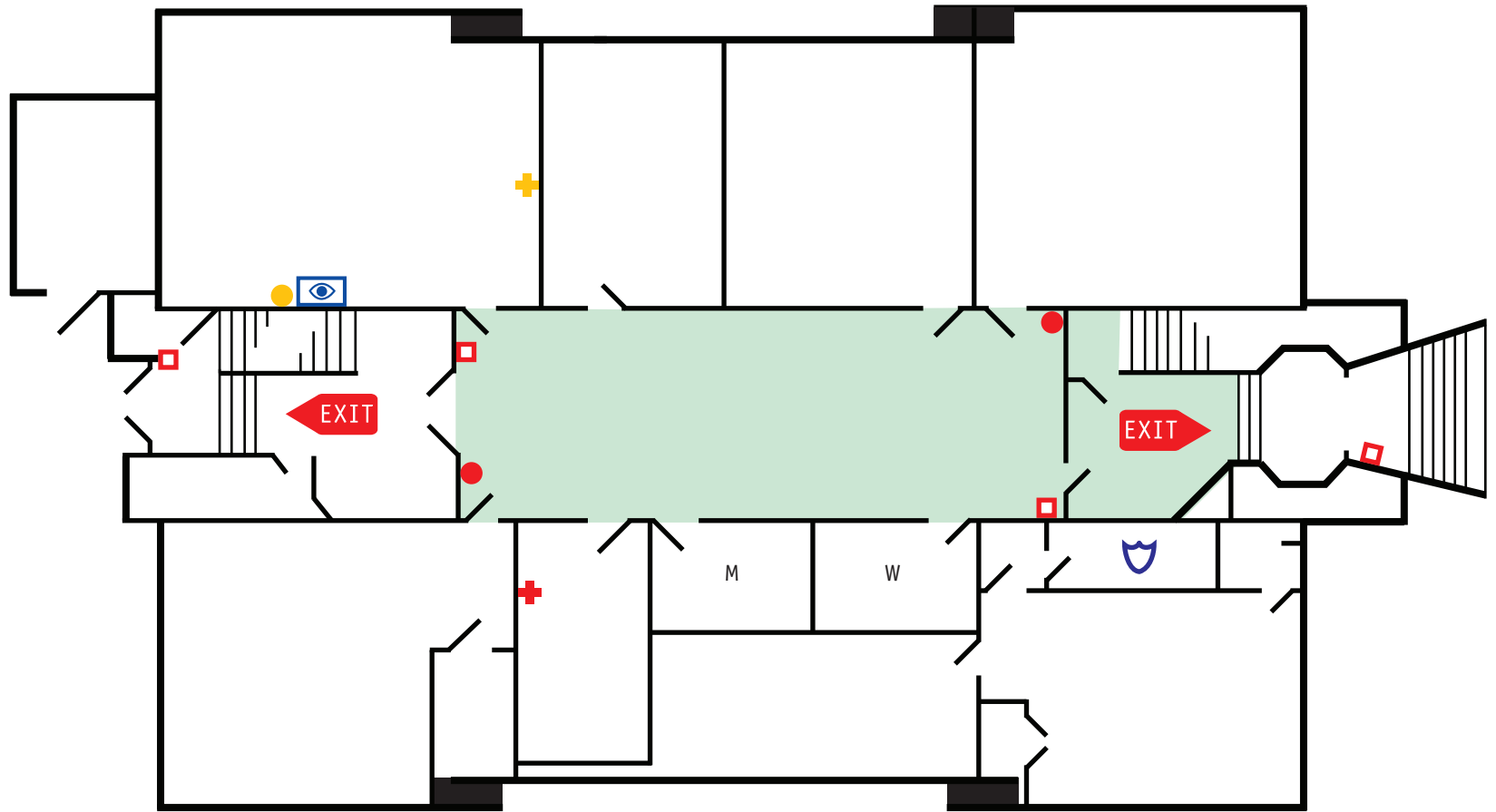
EMERGENCY SHELTER:

First floor interior hall

- | | | |
|--|-------------------------|---|
|  EXIT | EXIT ROUTE |  TELEPHONE |
|  EXIT | EMERGENCY EXITS |  FIRST AID KITS |
|  | FIRE EXTINGUISHER |  SECURITY DESK |
|  | FIRE ALARM PULL |  DISABILITY REFUGE |
|  | EYE WASH STATION / SINK |  HOUSE KEEPING |
|  | EMERGENCY INFORMATION |  HEALTH AND SAFETY STATION |

MICA PLACE LEVEL 2

Facing East



SAFE MEETING LOCATION:

N. Collington and Ashland Avenue

EMERGENCY SHELTER:

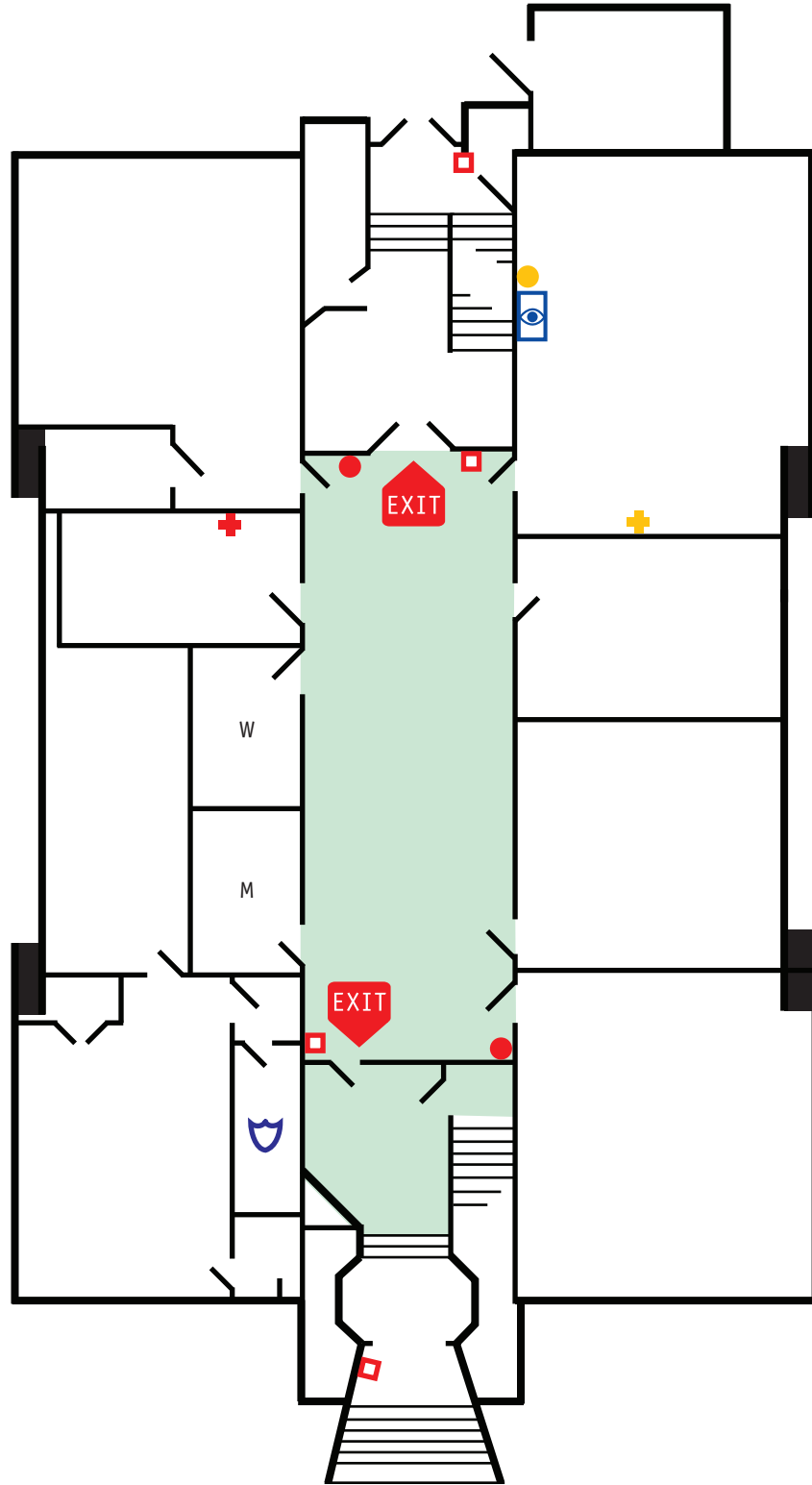
First floor interior hall

- EXIT ROUTE
- EMERGENCY EXITS
- FIRE EXTINGUISHER
- FIRE ALARM PULL
- EYE WASH STATION / SINK
- EMERGENCY INFORMATION

- TELEPHONE
- FIRST AID KITS
- SECURITY DESK
- DISABILITY REFUGE
- HOUSE KEEPING
- HEALTH AND SAFETY STATION

MICA PLACE LEVEL 2

Facing North



SAFE MEETING LOCATION:

N. Collington and Ashland Avenue

EMERGENCY SHELTER:

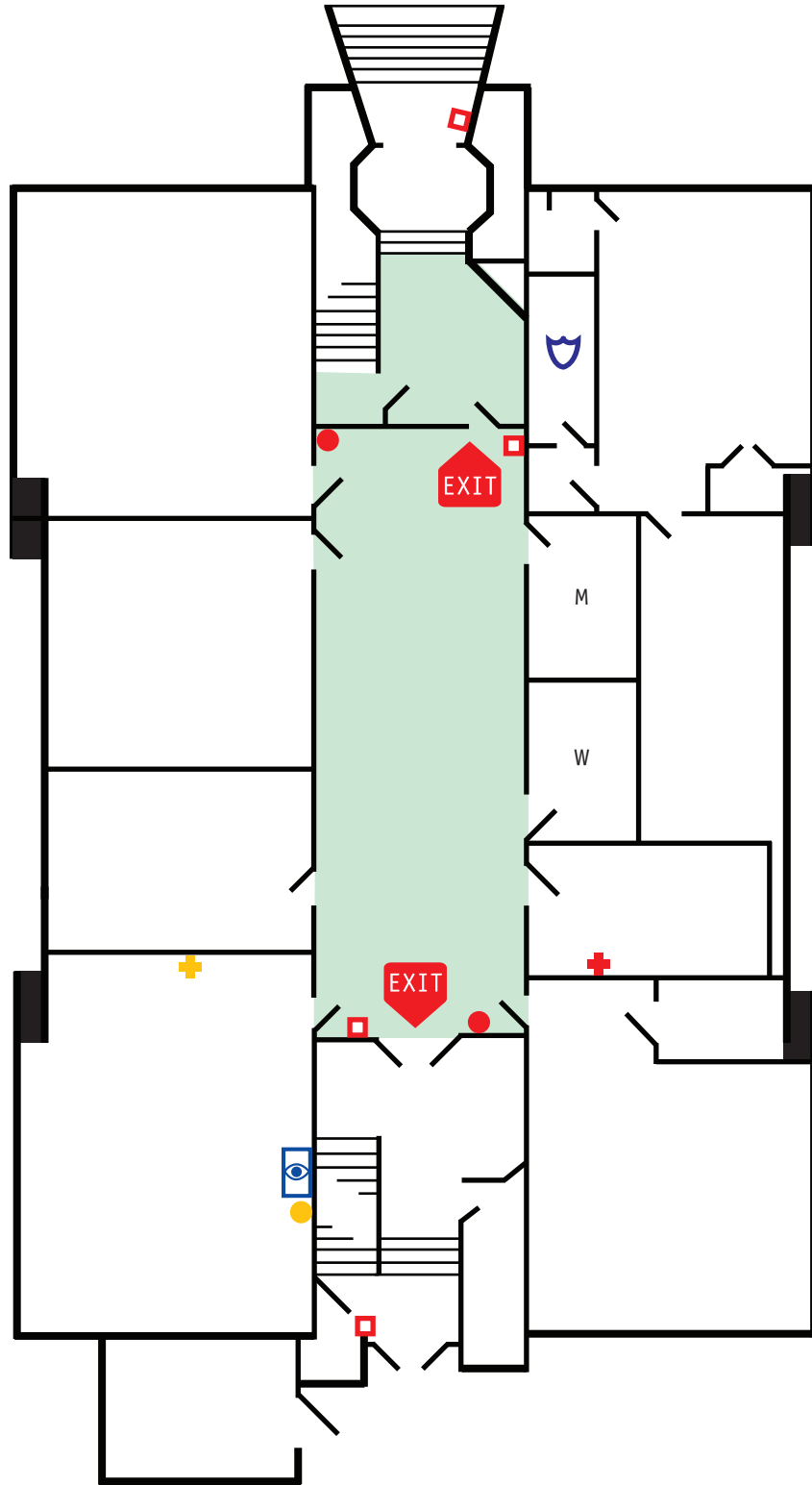
First floor interior hall

- EXIT ROUTE
- EMERGENCY EXITS
- FIRE EXTINGUISHER
- FIRE ALARM PULL
- EYE WASH STATION / SINK
- EMERGENCY INFORMATION

- TELEPHONE
- FIRST AID KITS
- SECURITY DESK
- DISABILITY REFUGE
- HOUSE KEEPING
- HEALTH AND SAFETY STATION

MICA PLACE LEVEL 2

Facing South



SAFE MEETING LOCATION:

N. Collington and Ashland Avenue

EMERGENCY SHELTER:

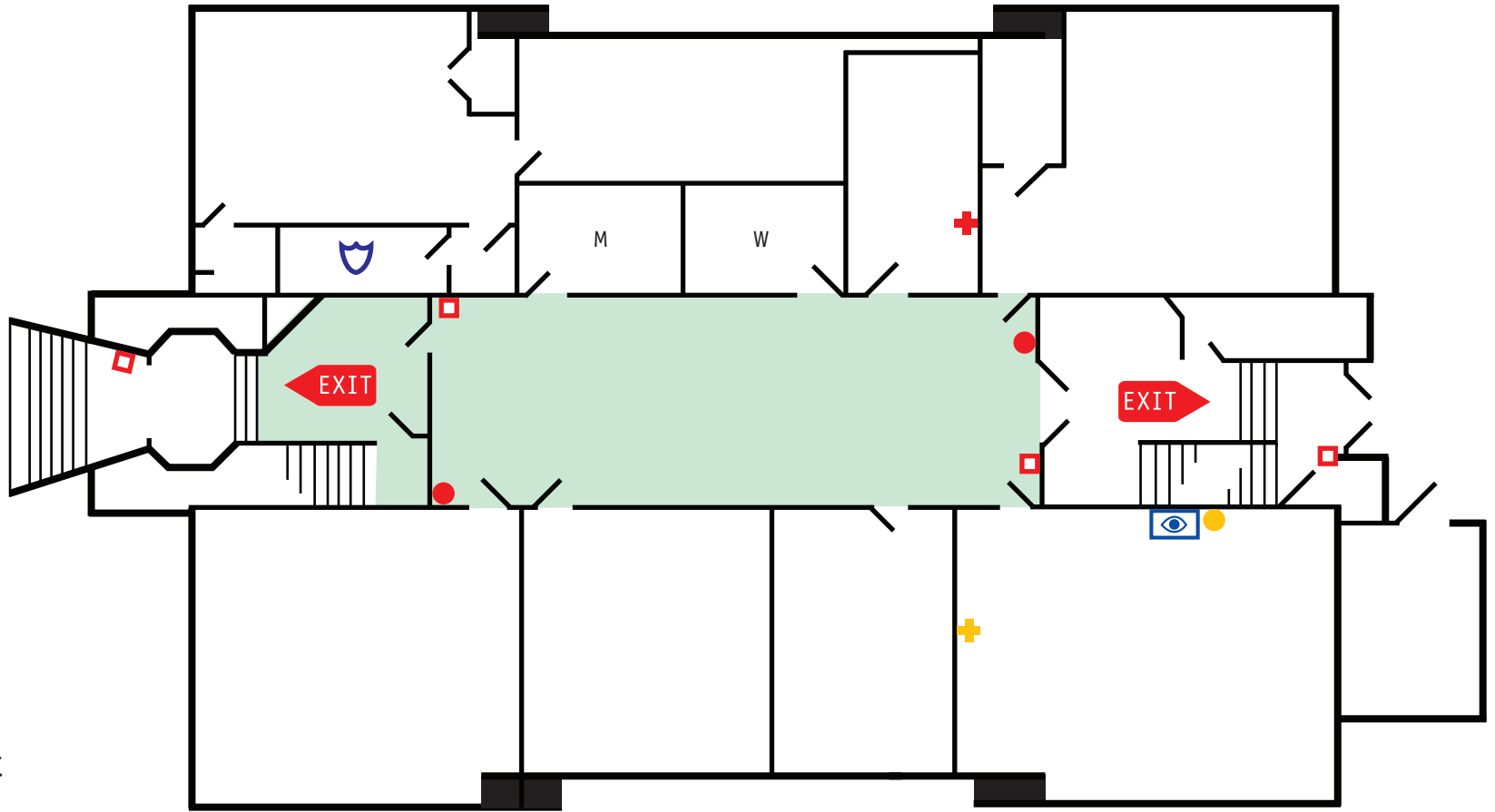
First floor interior hall

- EXIT ROUTE
- EMERGENCY EXITS
- FIRE EXTINGUISHER
- FIRE ALARM PULL
- EYE WASH STATION / SINK
- EMERGENCY INFORMATION

- TELEPHONE
- FIRST AID KITS
- SECURITY DESK
- DISABILITY REFUGE
- HOUSE KEEPING
- HEALTH AND SAFETY STATION

MICA PLACE LEVEL 2

Facing West















SAFE MEETING LOCATION:

N. Collington and Ashland Avenue

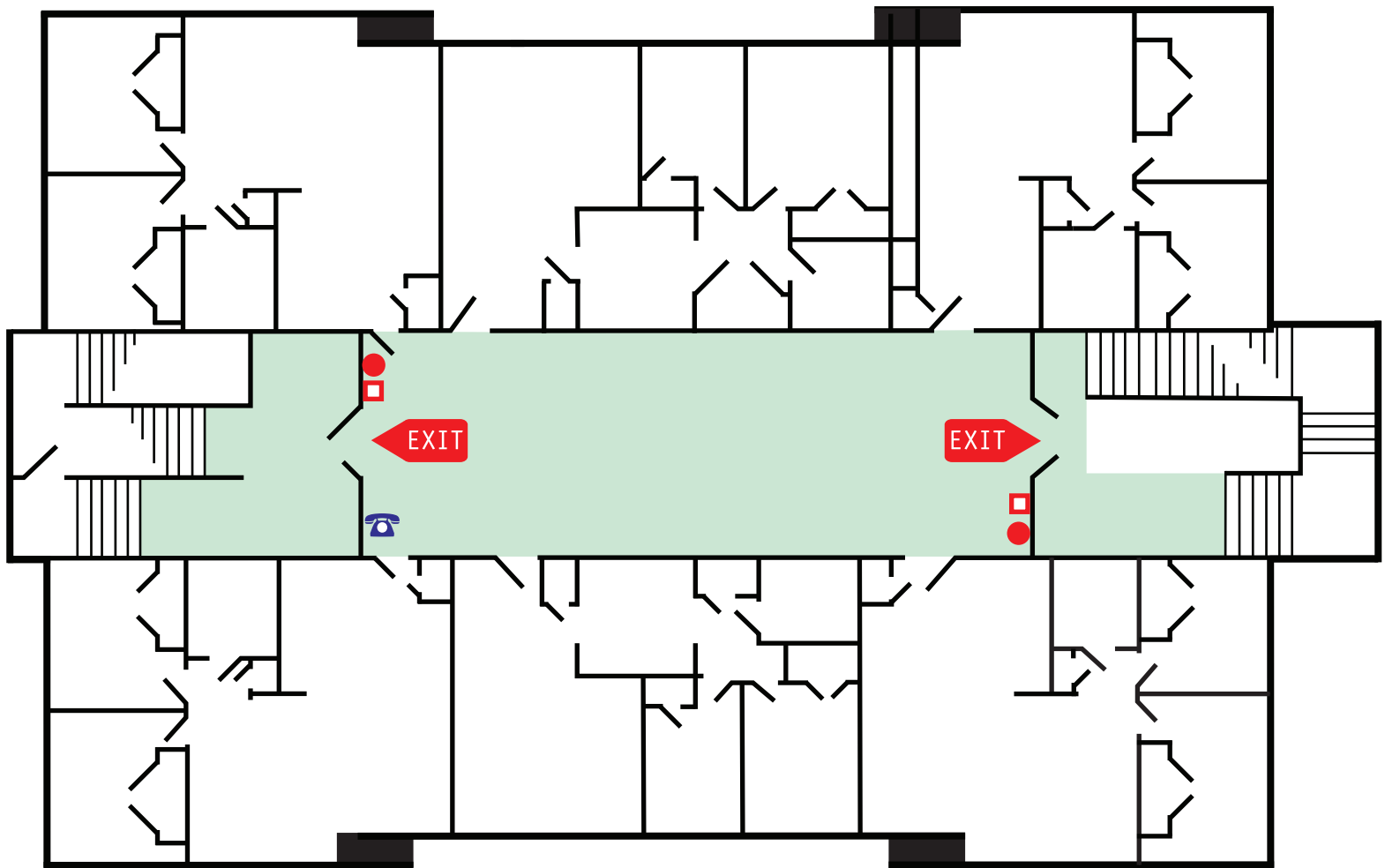
EMERGENCY SHELTER:

First floor interior hall

- | | |
|---|---|
|  EXIT ROUTE |  TELEPHONE |
|  EMERGENCY EXITS |  FIRST AID KITS |
|  FIRE EXTINGUISHER |  SECURITY DESK |
|  FIRE ALARM PULL |  DISABILITY REFUGE |
|  EYE WASH STATION / SINK |  HOUSE KEEPING |
|  EMERGENCY INFORMATION |  HEALTH AND SAFETY STATION |

MICA PLACE LEVEL 3

Facing East















SAFE MEETING LOCATION:

N. Collington and Ashland Avenue

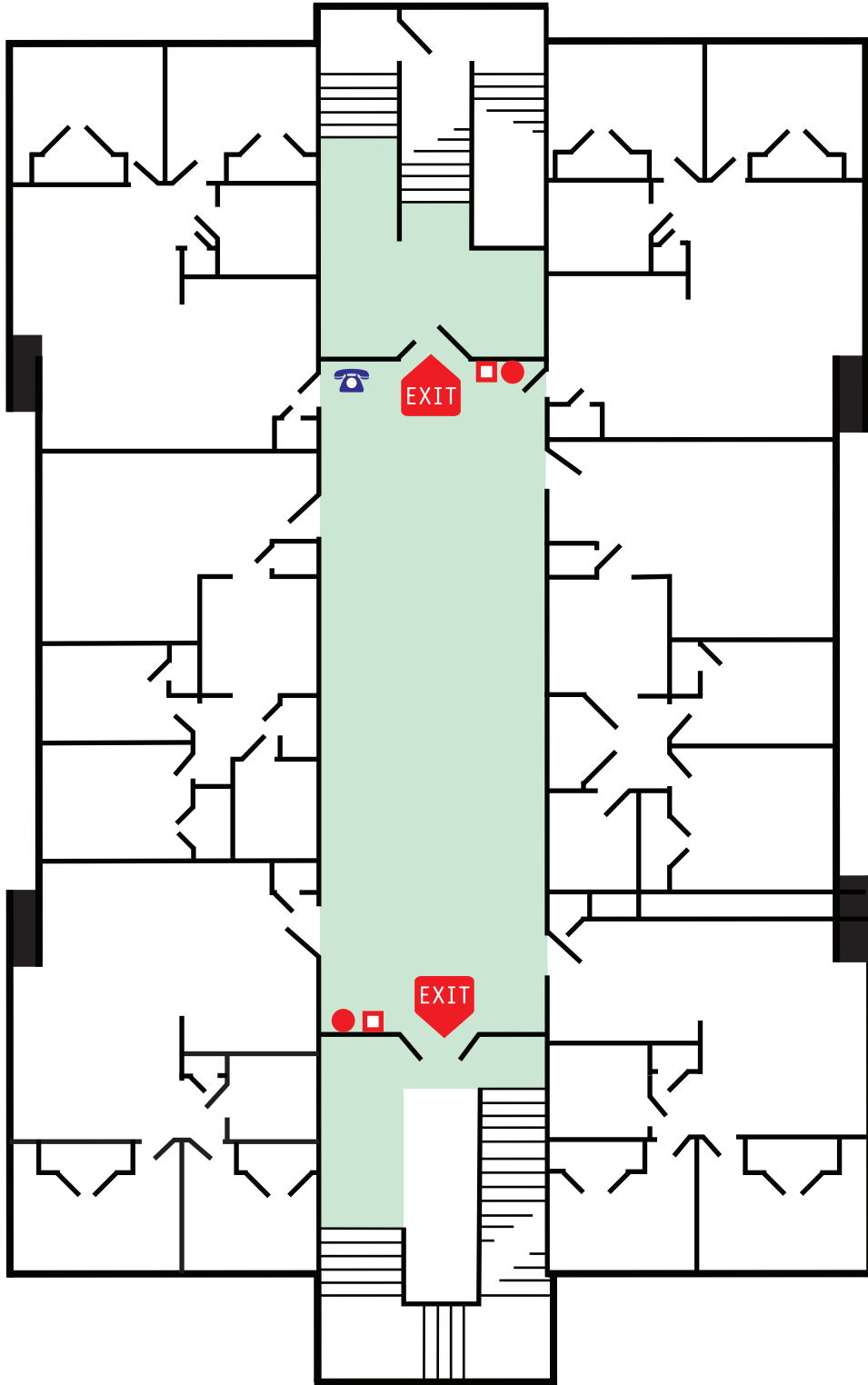
EMERGENCY SHELTER:

First floor interior hall

- | | | | |
|---|-------------------------|---|---------------------------|
|  | EXIT ROUTE |  | TELEPHONE |
|  | EMERGENCY EXITS |  | FIRST AID KITS |
|  | FIRE EXTINGUISHER |  | SECURITY DESK |
|  | FIRE ALARM PULL |  | DISABILITY REFUGE |
|  | EYE WASH STATION / SINK |  | HOUSE KEEPING |
|  | EMERGENCY INFORMATION |  | HEALTH AND SAFETY STATION |

MICA PLACE LEVEL 3

Facing North
















SAFE MEETING LOCATION:

N. Collington and Ashland Avenue

EMERGENCY SHELTER:

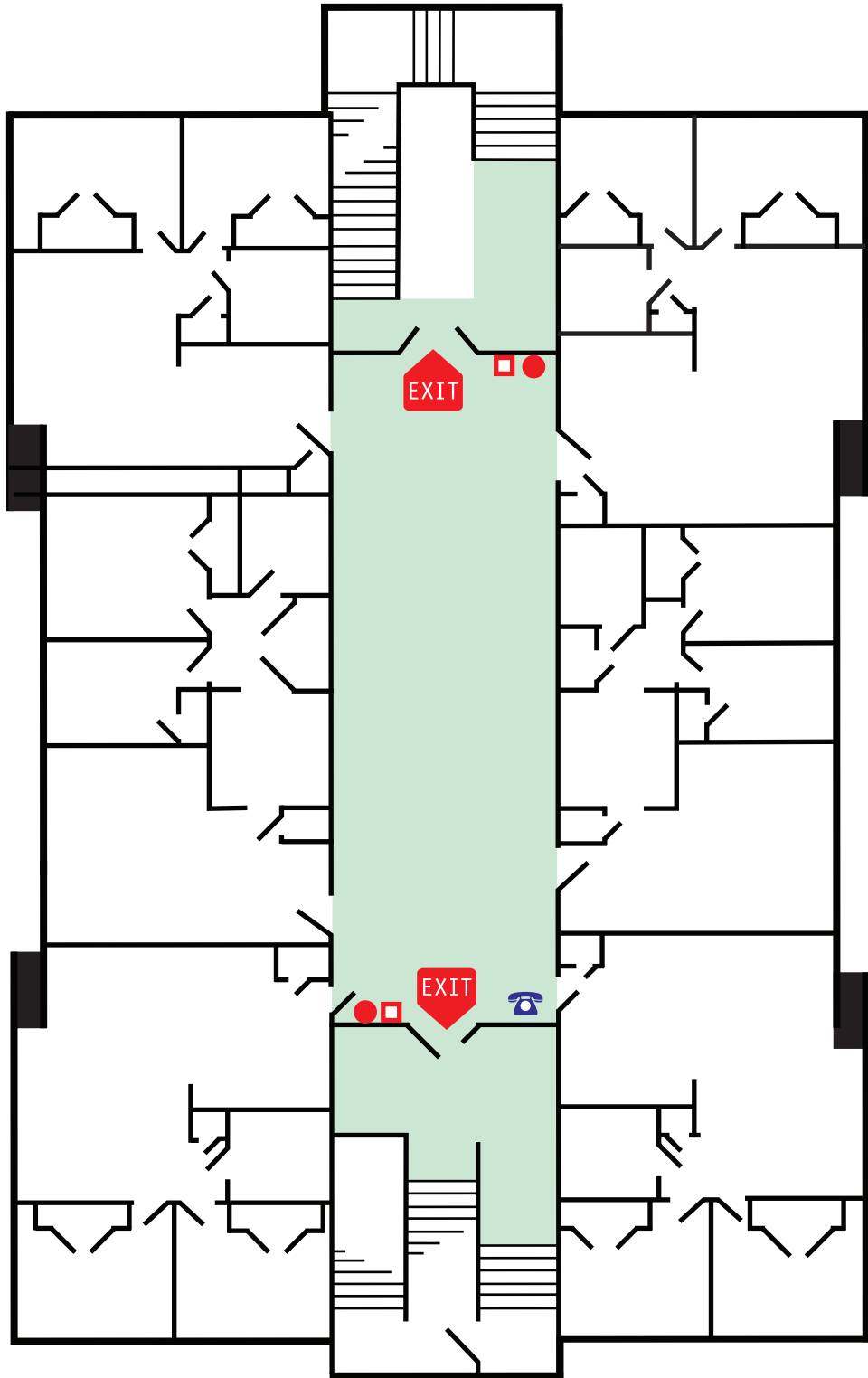
First floor interior hall

-  EXIT ROUTE 
-  EMERGENCY EXITS
-  FIRE EXTINGUISHER
-  FIRE ALARM PULL
-  EYE WASH STATION / SINK
-  EMERGENCY INFORMATION

-  TELEPHONE
-  FIRST AID KITS
-  SECURITY DESK
-  DISABILITY REFUGE
-  HOUSE KEEPING
-  HEALTH AND SAFETY STATION

MICA PLACE LEVEL 3

Facing South















SAFE MEETING LOCATION:

N. Collington and Ashland Avenue

EMERGENCY SHELTER:

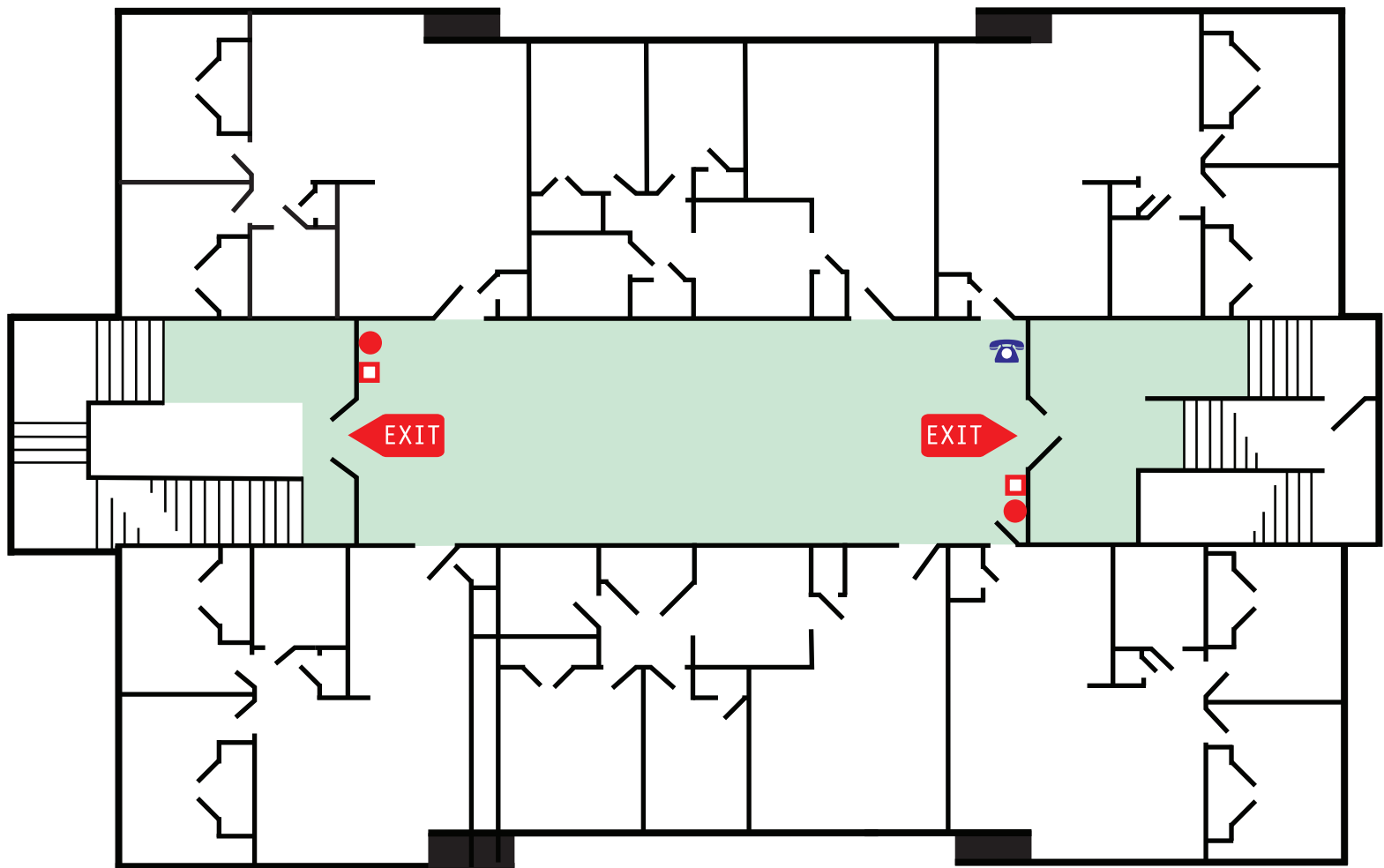
First floor interior hall

-  EXIT ROUTE 
-  EMERGENCY EXITS
-  FIRE EXTINGUISHER
-  FIRE ALARM PULL
-  EYE WASH STATION / SINK
-  EMERGENCY INFORMATION

-  TELEPHONE
-  FIRST AID KITS
-  SECURITY DESK
-  DISABILITY REFUGE
-  HOUSE KEEPING
-  HEALTH AND SAFETY STATION

MICA PLACE LEVEL 3

Facing West



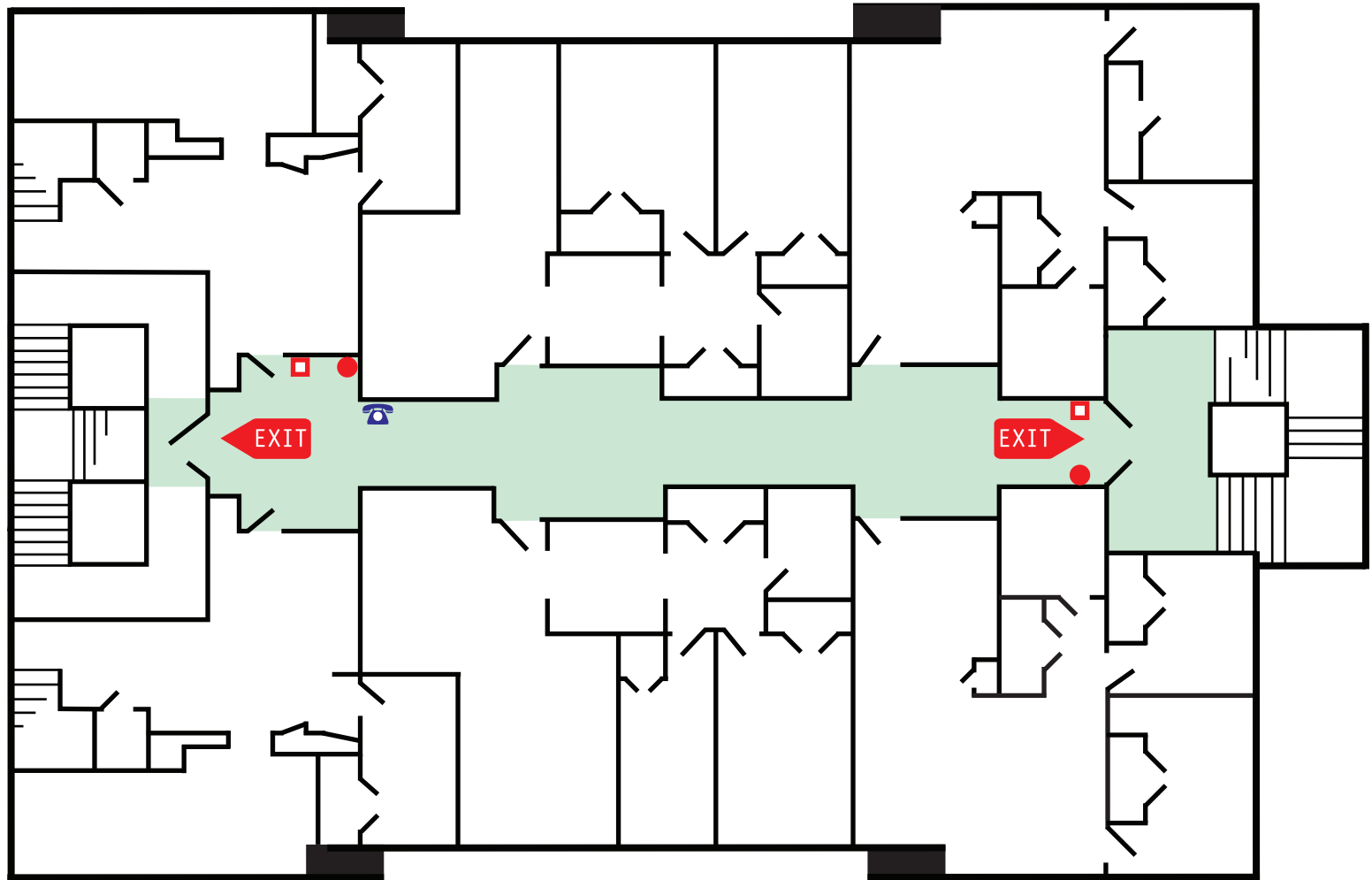
SAFE MEETING LOCATION:
N. Collington and Ashland Avenue

EMERGENCY SHELTER:
First floor interior hall

- | | | | |
|--|-------------------------|--|---------------------------|
| | EXIT ROUTE | | TELEPHONE |
| | EMERGENCY EXITS | | FIRST AID KITS |
| | FIRE EXTINGUISHER | | SECURITY DESK |
| | FIRE ALARM PULL | | DISABILITY REFUGE |
| | EYE WASH STATION / SINK | | HOUSE KEEPING |
| | EMERGENCY INFORMATION | | HEALTH AND SAFETY STATION |

MICA PLACE LEVEL 4

Facing East















SAFE MEETING LOCATION:

N. Collington and Ashland Avenue

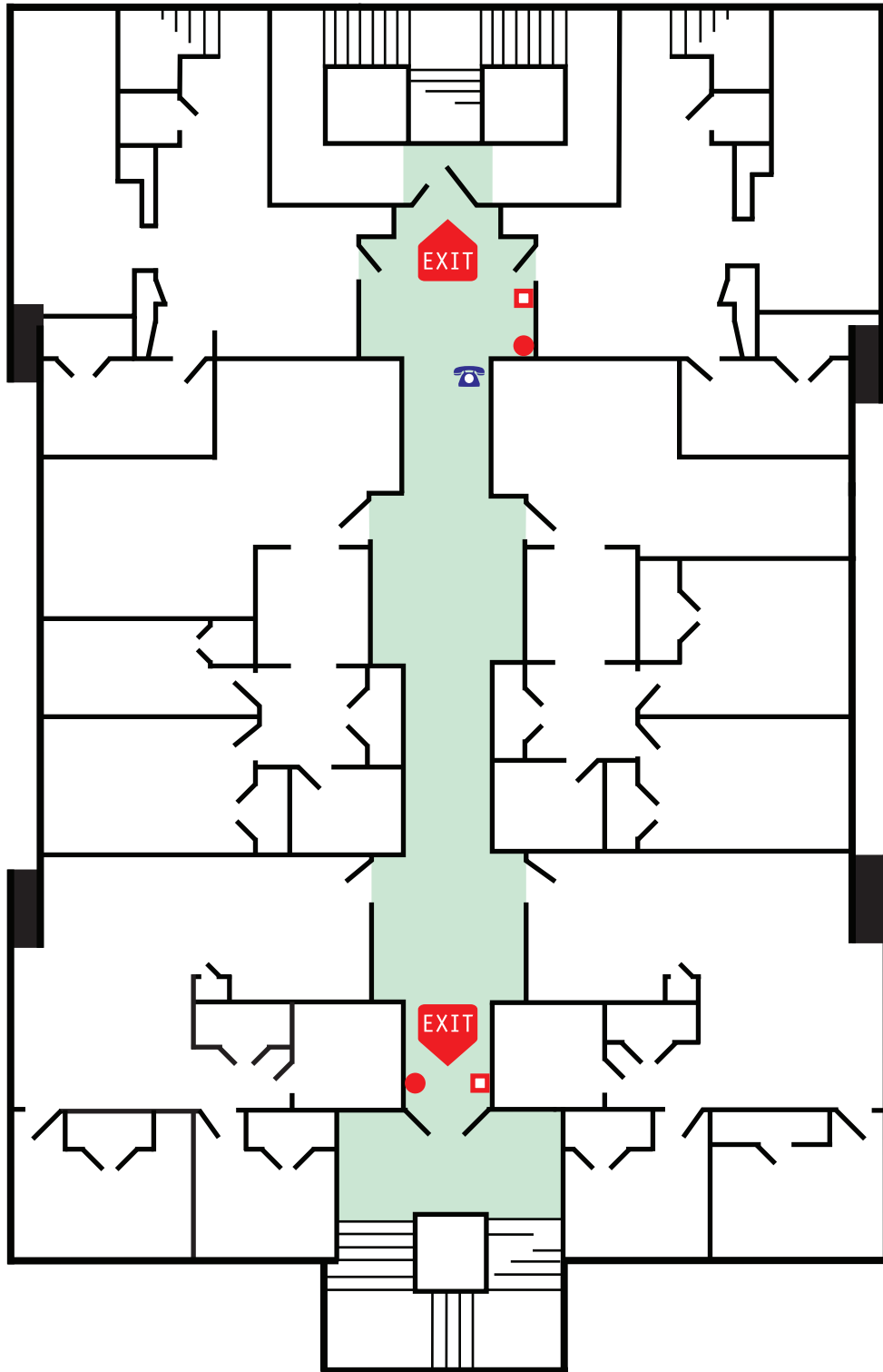
EMERGENCY SHELTER:

First floor interior hall

- | | | |
|--|-------------------------|---|
|  EXIT | EXIT ROUTE |  TELEPHONE |
|  EXIT | EMERGENCY EXITS |  FIRST AID KITS |
|  | FIRE EXTINGUISHER |  SECURITY DESK |
|  | FIRE ALARM PULL |  DISABILITY REFUGE |
|  | EYE WASH STATION / SINK |  HOUSE KEEPING |
|  | EMERGENCY INFORMATION |  HEALTH AND SAFETY STATION |

MICA PLACE LEVEL 4

Facing North
















SAFE MEETING LOCATION:

N. Collington and Ashland Avenue

EMERGENCY SHELTER:

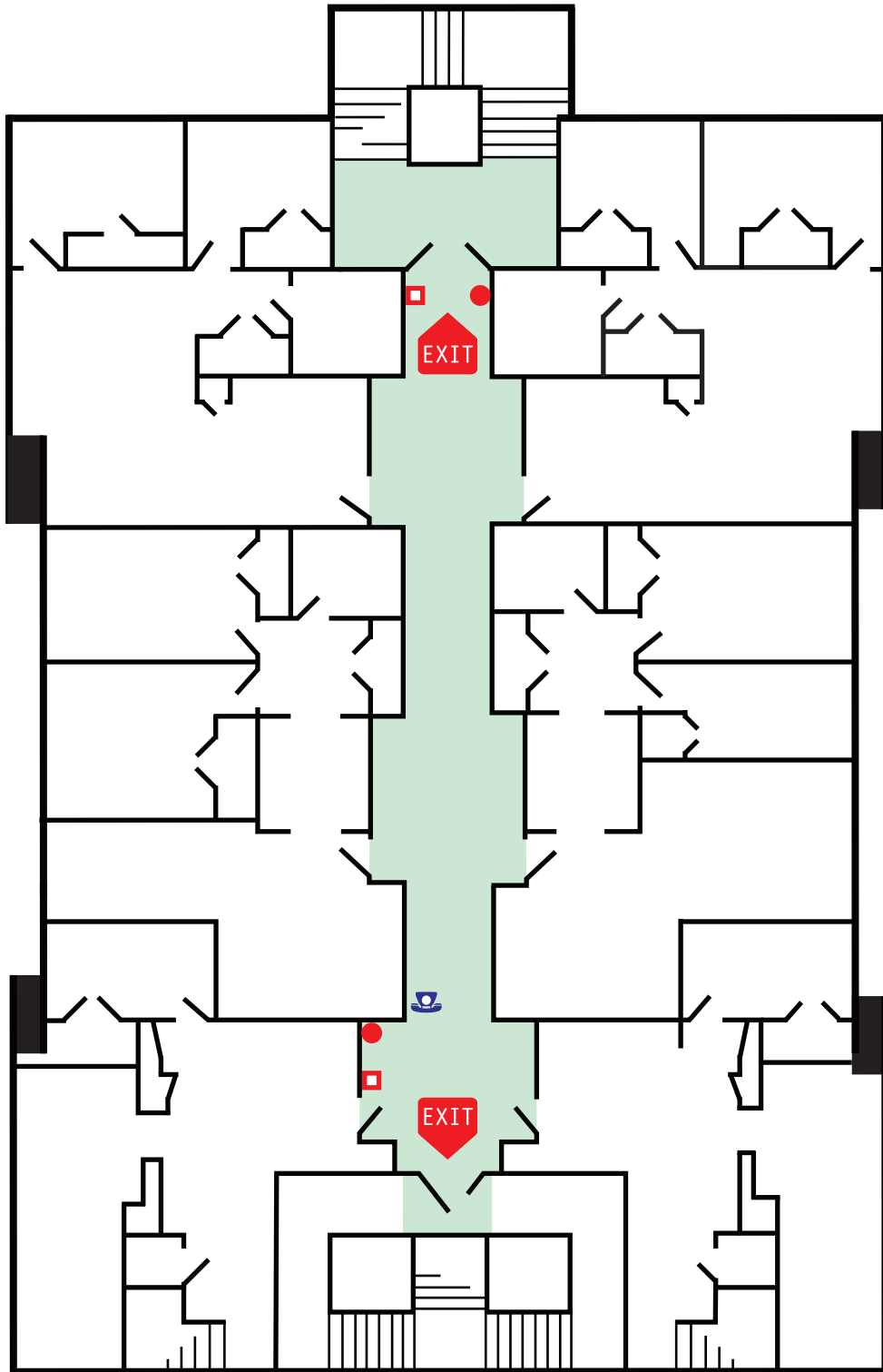
First floor interior hall

-  EXIT ROUTE 
-  EMERGENCY EXITS
-  FIRE EXTINGUISHER
-  FIRE ALARM PULL
-  EYE WASH STATION / SINK
-  EMERGENCY INFORMATION

-  TELEPHONE
-  FIRST AID KITS
-  SECURITY DESK
-  DISABILITY REFUGE
-  HOUSE KEEPING
-  HEALTH AND SAFETY STATION

MICA PLACE LEVEL 4

Facing South
















SAFE MEETING LOCATION:

N. Collington and Ashland Avenue

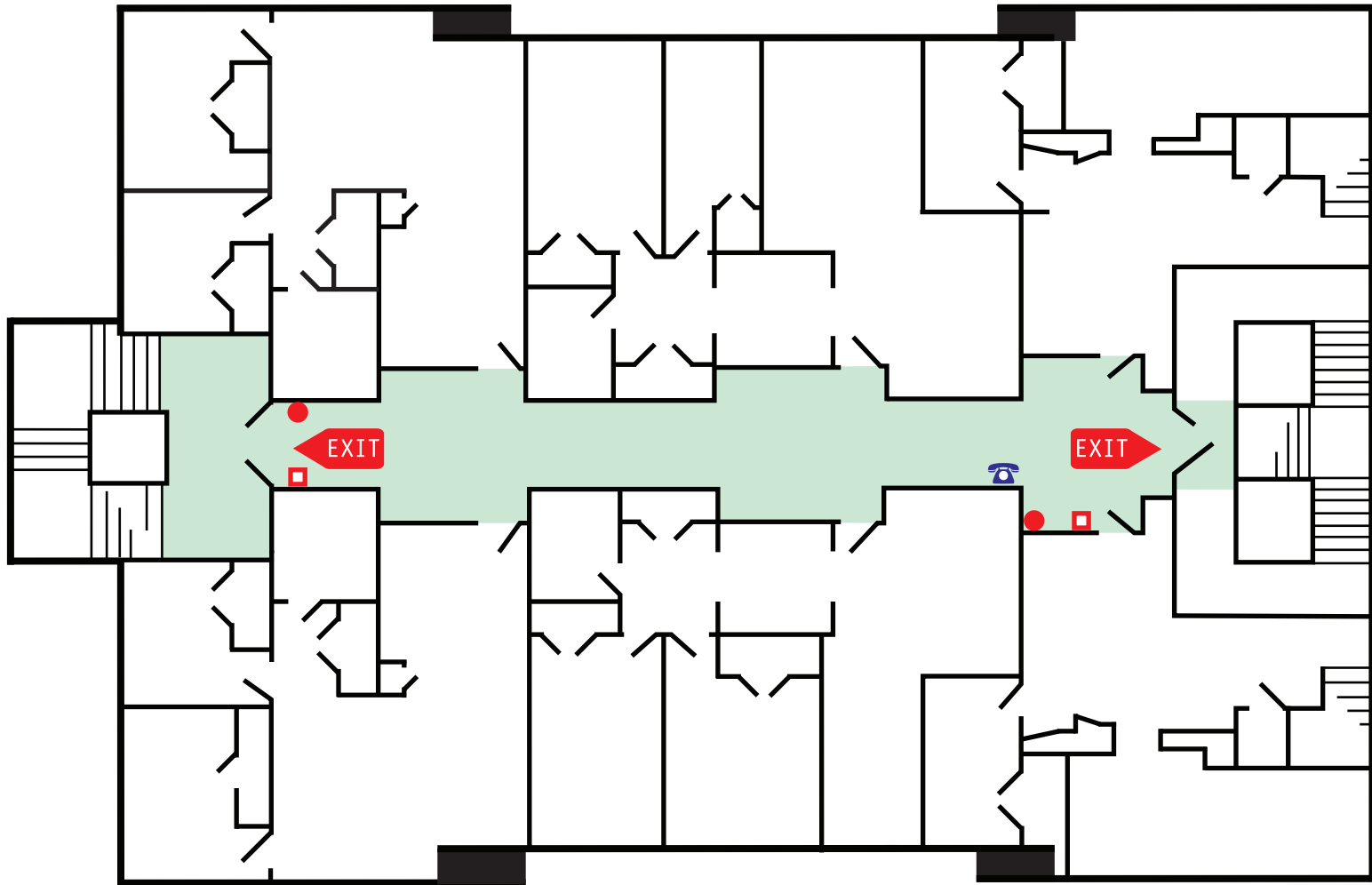
EMERGENCY SHELTER:

First floor interior hall

- | | | | | |
|---|-------------------------|--|---|---------------------------|
|  | EXIT ROUTE |  |  | TELEPHONE |
|  | EMERGENCY EXITS | |  | FIRST AID KITS |
|  | FIRE EXTINGUISHER | |  | SECURITY DESK |
|  | FIRE ALARM PULL | |  | DISABILITY REFUGE |
|  | EYE WASH STATION / SINK | |  | HOUSE KEEPING |
|  | EMERGENCY INFORMATION | |  | HEALTH AND SAFETY STATION |

MICA PLACE LEVEL 4

Facing West



SAFE MEETING LOCATION:

N. Collington and Ashland Avenue

EMERGENCY SHELTER:

First floor interior hall

- | | | | | |
|--|-------------------------|--|--|---------------------------|
| | EXIT ROUTE | | | TELEPHONE |
| | EMERGENCY EXITS | | | FIRST AID KITS |
| | FIRE EXTINGUISHER | | | SECURITY DESK |
| | FIRE ALARM PULL | | | DISABILITY REFUGE |
| | EYE WASH STATION / SINK | | | HOUSE KEEPING |
| | EMERGENCY INFORMATION | | | HEALTH AND SAFETY STATION |